



Bow Road, London, E3

BUTLER & STAG



Nestled within a beautiful period building in the sought-after Tredegar Square Conservation Area, this one-bedroom apartment offers both character and modern living. The property benefits from access to a shared rear garden, providing a tranquil outdoor space—ideal for enjoying the spring and summer months.



Leasehold

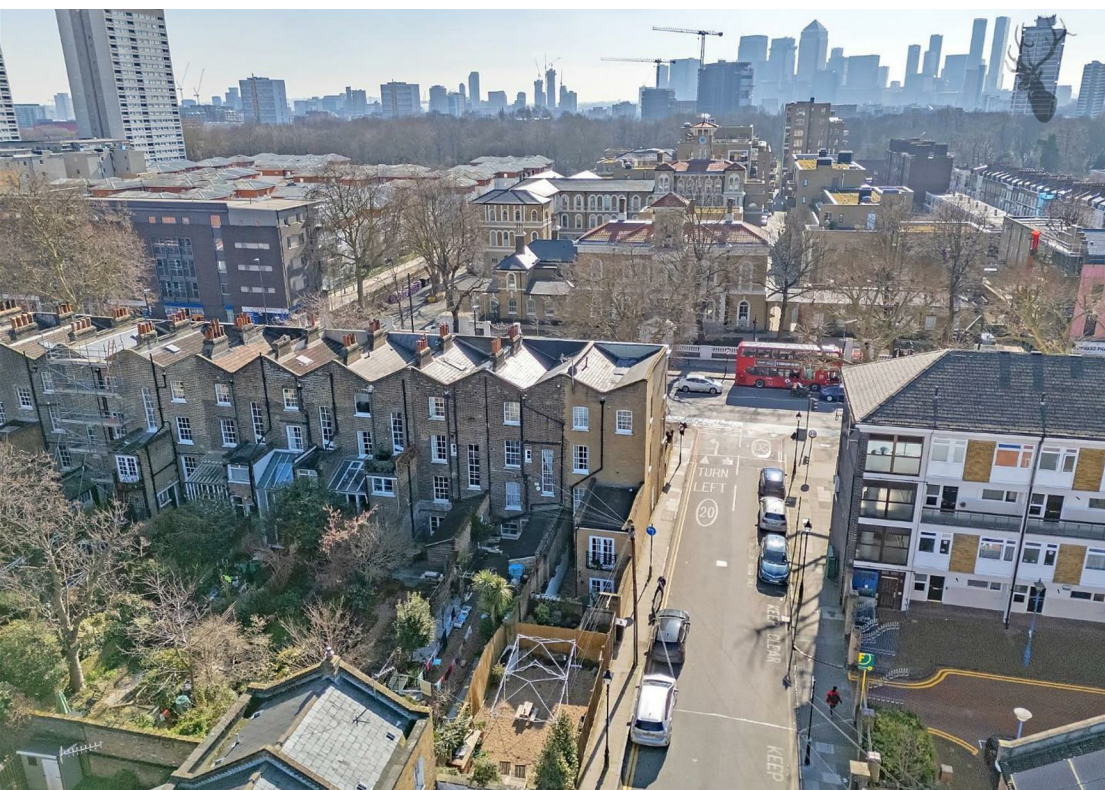
- Charming One Bedroom Apartment
- Excellent Local Amenities
- Tredegar Conservation Area
- Character Property
- Open-Plan Living & Kitchen Space
- Moments From Mile End Station
- Shared Garden
- Modern Finishings

Conveniently located just moments from Mile End Underground station, the apartment is perfectly positioned for those looking to explore the vibrant heart of East London. With excellent transport links, including easy access to Central London, this property offers the ideal base for both work and leisure, while nearby amenities cater to every need.

The apartment itself is located on the first floor and is filled with natural light, thanks to its high ceilings and well-designed layout. The spacious open-plan living area provides a bright and airy atmosphere, seamlessly blending into the contemporary kitchen. The double bedroom offers a peaceful retreat, and the spacious, modern bathroom features sleek fixtures and finishes.

With its blend of period charm and modern convenience, this apartment is an excellent choice for anyone seeking a stylish, comfortable home in a prime East London location.





Bow Road

Approx. Gross Internal Area 29 Sq M (312.2 Sq Ft)

BUTLER & STAG

First Floor

Approx. 29.0 sq. metres (312.2 sq. feet)



Measurements are approximate and for illustration purposes only. While we do not doubt the accuracy and completeness, we advise you conduct a careful independent assessment of the property to determine monetary value.
© @modephoto.uk www.modephoto.co.uk

IMPORTANT NOTICE - These particulars have been prepared in good faith and they are not intended to constitute part of an offer or contract. We have not performed a structural survey on this property and the services, appliances and specific fittings have not been tested. All photographs, measurements, floor plans and distances referred to are given as a guide and should not be relied upon.

BUTLER & STAG

☎ 020 8102 1236

🏠 508 Roman Road, Bow, London, E3 5LU

✉ bow@butlerandstag.com

www.butlerandstag.uk